



Personal Learning Device (PLD) Initiative

Briefing for Parents
By Mr Henry Ong (HOD ICT)

A PRESENTATION BY
MINISTRY OF EDUCATION, SINGAPORE



The National Digital Literacy Programme and the PLD Initiative

An Overview

The National Digital Literacy Programme (NDLP)

1. The NDLP was launched in March 2020 to **make digital learning inclusive** by **equipping students with the digital skills** to be future-ready.
2. Under the NDLP, every secondary school student will **own a school-prescribed personal learning device (PLD)**. Students may use funds from their Edusave Account to pay for the PLD.

Intended Outcomes of the PLD Initiative

The use of the PLD for teaching and learning aims to:



Support the Development of Digital Literacy



Support Self-Directed and Collaborative Learning



Enhance Teaching and Learning

OVERVIEW OF NDLP AND PLD INITIATIVE

Students' Experiences (Video 1)





MARSILING SECONDARY SCHOOL

Learning Using iPads

- 1) **Learn actively in all subjects: Participating** in Alternative assessments / Authentic learning tasks / Learning Experiences that require research, digital creation, and collaborative learning.
- 2) **Learn beyond the classroom: Home-based learning**, Review past lessons, access digital resources on the **Singapore Student Learning Space (SLS)** platform and other digital platforms to enhance their learning,



MARSILING SECONDARY SCHOOL

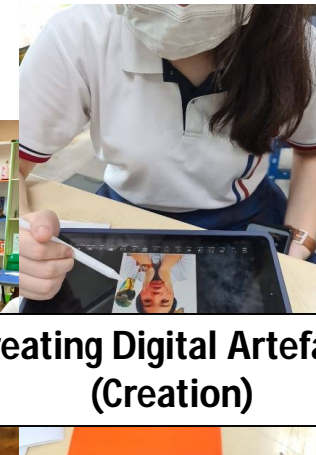
Learning Using iPads



**Learning the Basic of
iPads
(Digital Literacies)**



**Exploration and Discussion
(Self Directed and Collaborative
Learning)**



**Creating Digital Artefacts
(Creation)**



MARSILING SECONDARY SCHOOL iPad Lockers in Every Classroom

All students are allocated a personal iPad locker to safekeep their devices during Recess, Lunch and CCAs.





MARSILING SECONDARY SCHOOL

2022 Marsilian's Perception on Learning using iPad

The iPad (PLD) has made my lessons more enjoyable.

Strongly Agree & Agree	Sec 1	95.7%
	Sec 2	97.3%
	Sec 3	96.0%
	Sec 4	95.4%
	Overall	96.0%



MARSILING SECONDARY SCHOOL

2022 Marsilian's Perception on Learning using iPad

I am able to learn better using the iPad (PLD).

Strongly Agree & Agree	Sec 1	94.4%
	Sec 2	95.9%
	Sec 3	92.6%
	Sec 4	94.2%
	Overall	94.2%



MARSILING SECONDARY SCHOOL

2022 Marsilian's Perception on Learning using iPad

I am able to revise better using the iPad (PLD).

Strongly Agree & Agree	Sec 1	92.0%
	Sec 2	92.5%
	Sec 3	93.7%
	Sec 4	92.5%
	Overall	92.7%



MARSILING SECONDARY SCHOOL

2022 Marsilian's Perception on Learning using iPad

My teachers have been using iPads meaningfully in class.

Strongly Agree & Agree	Sec 1	96.3%
	Sec 2	97.9%
	Sec 3	97.7%
	Sec 4	99.4%
	Overall	97.9%



MARSILING SECONDARY SCHOOL

2022 Marsilian's Perception on Learning using iPad

With my learning materials/worksheets online, I am able to learn and revise anytime and anywhere.

Strongly Agree & Agree	Sec 1	93.8%
	Sec 2	97.3%
	Sec 3	94.9%
	Sec 4	97.1%
	Overall	95.7%

Supporting Students in the Safe and Effective Use of the Devices

SAFE AND EFFECTIVE USE OF DEVICES

Parents' Voices: In Conversation on Students' Use of PLDs for Learning (Video 2)



Supporting Students in the Safe and Effective Use of the Devices

The school has measures in place to enable a safer digital environment for learning with the use of PLDs, e.g.

- Classroom management and routines
- Educating students on Cyber Wellness
- Partnering parents/guardians to support students in their use of technology for learning
- Device Management Application (DMA)

Device Management Application (DMA)

The Device Management Application (DMA) software will be installed* on all students' devices** to provide a safe learning experience for your child, and to prevent misuse of the device.

The DMA will be **funded by MOE** and will be **uninstalled** from the device **when your child graduates / leaves the school**.

*Installation of the DMA will be performed after the collection of the device.
Students will be guided on the installation.

**Both devices purchased through the school and pre-existing student-owned devices.

Providing
parents with
**greater
choice**
for after-
school PLD
use

*More information on
how parents can
exercise your option
will be provided
soon.*

Default

**MOE/school DMA settings
will continue after school
hours***

For parents who want their child's use of the devices to be restricted only to teaching and learning, and prefer to leave it to the school/MOE to decide on DMA settings both during school and after school hours.

Option A

**Parents can determine
DMA settings after school
hours***

For parents who want more leeway over the use of the device, and to want to take charge of the level of restrictions for their child's use of the device after school hours.

Option B

**Parents can choose to
disable DMA after
school hours***

For parents who do not want their child's use of the device to be regulated by DMA after school.

**School hours refer to the time within which students are involved in structured learning activities within the school, including time allocated for CCAs and enrichment programmes. The hours are defined by the school.*

- **Having default school settings continue after school hours is the best option for parents who prefer not to, or do not feel ready to manage their child's device use on their own.**
- **Parents can request to change their choice of DMA settings at any time.**

Deciding on the Choice of After-School DMA Option

Parents/guardians may wish to consider the following questions before deciding on the choice of after-school DMA option which is best for your child's/ward's learning.

1. Child's/ward's current device usage habits

- How much time does my child/ward spend on their device?
- How well is my child/ward able to regulate their device usage on their own?
- Does my child/ward get easily distracted while doing online learning?

2. Parents'/Guardians' involvement

- How confident and familiar am I with managing my child's/ward's cyber wellness?
- Are there existing routines and open conversations on the use of the Internet at home?
- Am I aware of how to prevent different types of cyber threats that my child/ward might face?



Have a conversation with your child/ward to talk about which setting is best for your child's/ward's learning.

Data Collected by the DMA

The DMA does **NOT** collect any of the following data:

- Login IDs and passwords entered into websites or into any applications
- Actions performed (e.g. posts, online comments, items added to a shopping cart, etc.) when visiting websites and using apps
- Documents and photos stored in the PLDs
- PLD location
- Webcam videos and microphone recordings

Device and Funding Information

Marsiling Secondary School Personal Learning Device



The school will be using the

Apple iPad 10.2" (9th Gen, 64GB, WIFI)

Rugged Case + Original Apple Pencil (Tentative)

Total Cost with GST: **\$792.40 (inclusive 9% gst)**

(Enhanced Bundle (3 years warranty) + Original Apple Pencil+ Protective Case)

Parent's letter to be given next week.

Marsiling Secondary School Personal Learning Device



- The school chose the device because of:
 - Good OS stability.
 - Good Battery Life.
 - Availability of Education APPs
 - Support APPs and web based APPs (Google Classrooms, SLS).
 - Simple Interface.
 - Portability
 - Strong Partnership and Support from APPLE Education

PLD Bundle

Device Bundle includes
<ul style="list-style-type: none">▪ Apple iPad 10.2" (9th Gen, WIFI, 64GB)▪ Original Apple Pencil▪ Ruggedized Silicon Casing (Shock-absorbent case)▪ Insurance and Warranty

Your child's/ward's PLD will come with the **Enhanced** Device Bundle which includes:

- 3-year warranty and 3-year insurance
- 2 repairs or 1 replacement claim* (*Accidental Loss will not be replaced*).

Insurance Coverage

The package includes a a 3-year warranty, and 3-year insurance which includes:

Insurance Coverage	Claimable
<ul style="list-style-type: none">• Fire• Lightning• Power Surges• Accidental e.g water spillage, drop etc• Theft due to forcible entry• Robbery <p>* Accidental loss will not be covered by insurance.</p>	<p>*2 repairs or 1 replacement (3-year insurance)</p>

Funding Support for Singapore Citizen (SC) Students

- **The cost of the device bundle can be paid using your child's/ward's Edusave account**, after setting aside provision for payment of second-tier miscellaneous fees.
- To ensure the affordability of devices, MOE has provided **Edusave top-ups of \$200 in 2020 to 2022, and \$300 in 2023**, to all eligible Singaporean students in primary and secondary schools.
- This is on top of the annual \$290 credited into the Edusave account for Secondary School students and \$230 for Primary School students.

Funding Support for Singapore Citizen (SC) Students

- For SC students who are on MOE Financial Assistance Scheme or whose family's monthly income meets the following criteria:

**Gross Household Income (GHI) \leq \$3,000, or
Per Capita Income (PCI) \leq \$750**

the school will subsidise 50% of device bundle cost or \$350, whichever is lower.

- The remaining amount will be payable from the students' Edusave account. If there is insufficient balance in the students' Edusave account for the remaining amount, school will provide additional subsidy so that the cash out-of-pocket (OOP) is \$0.

Funding Scenario: Student A (SC)



Student A (SC on MOE FAS) GHI ≤ \$3,000 or PCI ≤ \$750	
Device Bundle Cost	\$792.40
Student Subsidy	\$350
Available Edusave Balance <i>(After setting aside for 2nd-tier misc fees)</i>	\$200.00 before deduction \$200.00 will be deducted
Additional Subsidy	\$242.40
Cash Out-of-pocket	\$0

For more details on financial assistance, please approach the school.
Each student would receive a personalised bill subsequently.

Funding Support for Singapore Citizen (SC) Students

- For SC students whose family's monthly income is:

**$\$3,000 < \text{Gross Household Income (GHI)} \leq \$4,400$, or
 $\$750 < \text{Per Capita Income (PCI)} \leq \$1,100$**

the school will subsidise 30% of device bundle cost or \$200, whichever is lower.

- The remaining amount will be payable from the students' Edusave account. If there is insufficient balance in the students' Edusave account for the remaining amount, school will provide additional subsidy so that the cash out-of-pocket (OOP) is not more than \$50.

Funding Scenario: Student B (SC)



**A13 Bionic chip, 3GB RAM,
64GB Storage,
10.2" Screen Size
(WIFI)**



Student B (Non MOE-FAS SC from lower income family) \$3,000 < GHI ≤ \$4,400 or \$750 < PCI ≤ \$1,100	
Device Bundle Cost	\$792.40
Student Subsidy	\$200
Available Edusave Balance <i>(After setting aside for 2nd-tier misc fees)</i>	\$200.00 before deduction \$200.00 will be deducted
Additional Subsidy	\$342.40
Cash Out-of-pocket	\$50.00

For more details on financial assistance, please approach the school.
Each student would receive a personalised bill subsequently.

Funding Support for Singapore Citizen (SC) Students

- SC students whose family's **monthly Gross Household Income (GHI) > \$4,400** or **monthly Per Capita Income (PCI) > \$1,100**, no subsidy will be provided. Parents/Guardians can use their child's/ward's Edusave or cash to defray the device bundle cost.

Funding Scenario: Student C (SC)



**A13 Bionic chip, 3GB
RAM, 64GB Storage,
10.2" Screen Size
(WIFI)**

Student C (Not Eligible for Subsidy) GHI > \$4,400 or PCI > \$1,100	
Device Bundle Cost	\$792.40
Available Edusave Balance <i>(After setting aside for 2nd-tier misc fees)</i>	\$200.00 before deduction \$200.00 will be deducted
Cash Out-of-pocket	\$592.40

For more details on financial assistance, please approach the school.
Each student would receive a personalised bill subsequently.

Funding Support for Non-Singapore Citizen Students

- For more details on financial assistance, please approach the school.
- Assistance will be considered on a case-by-case basis.

What's Next?

What's Next



Tentative Schedule

Time Frame	Activity
18-25 Jan 2024	Parental Consent for Purchase and Edusave Withdrawal Forms will be given to students
18 - Feb 2024 to collection	Online billing and cash/cheque/online payment (if any)
End of February/ Early March (Tentative)	Collection of Devices

* Parent Gateway / Parents' Letter would be used to convey information and to facilitate the purchase.

Important Contacts/ Helplines



To access/find out more about...	Contact/Helpline
This deck of slides	Available on the school websites under NDLP @ MSS
Edusave Balance	6260 0777
Financial assistance available	6894 1413