

Welcome Address by Principal

Sec 3 Parent-Teacher Conference



**A PRESENTATION BY
PRINCIPAL
MR LEONARD KOH
26 MARCH 2026**

OFFICIAL (OPEN) \ NON-SENSITIVE

MSS Is Getting More Popular

- **85%** of the students posted to our school had indicated Marsiling Secondary School as one of their top 2 choices.

Sec 1 Enrolment					
Posting Group	2022	2023	2024	2025	2026
3	64	72	73	74	89 ↑
2	71	79	90	90	76
1	29	24	39	39	40 ↑
Total	164	175	202	203	205 ↑

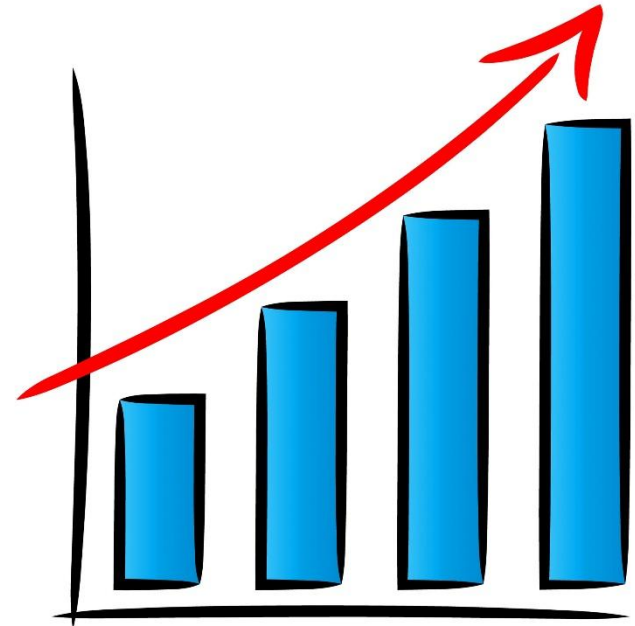
MSS Is Getting More Popular

- DSA applicants to our school has also increased over the years!

Sec 1 DSA Applicants				
Posting Group	2023	2024	2025	2026
3	2	8	12	10
2	7	16	15	22 ↑
1	4	5	8	12 ↑
Total	13	29	35	44 ↑

Student Enrolment

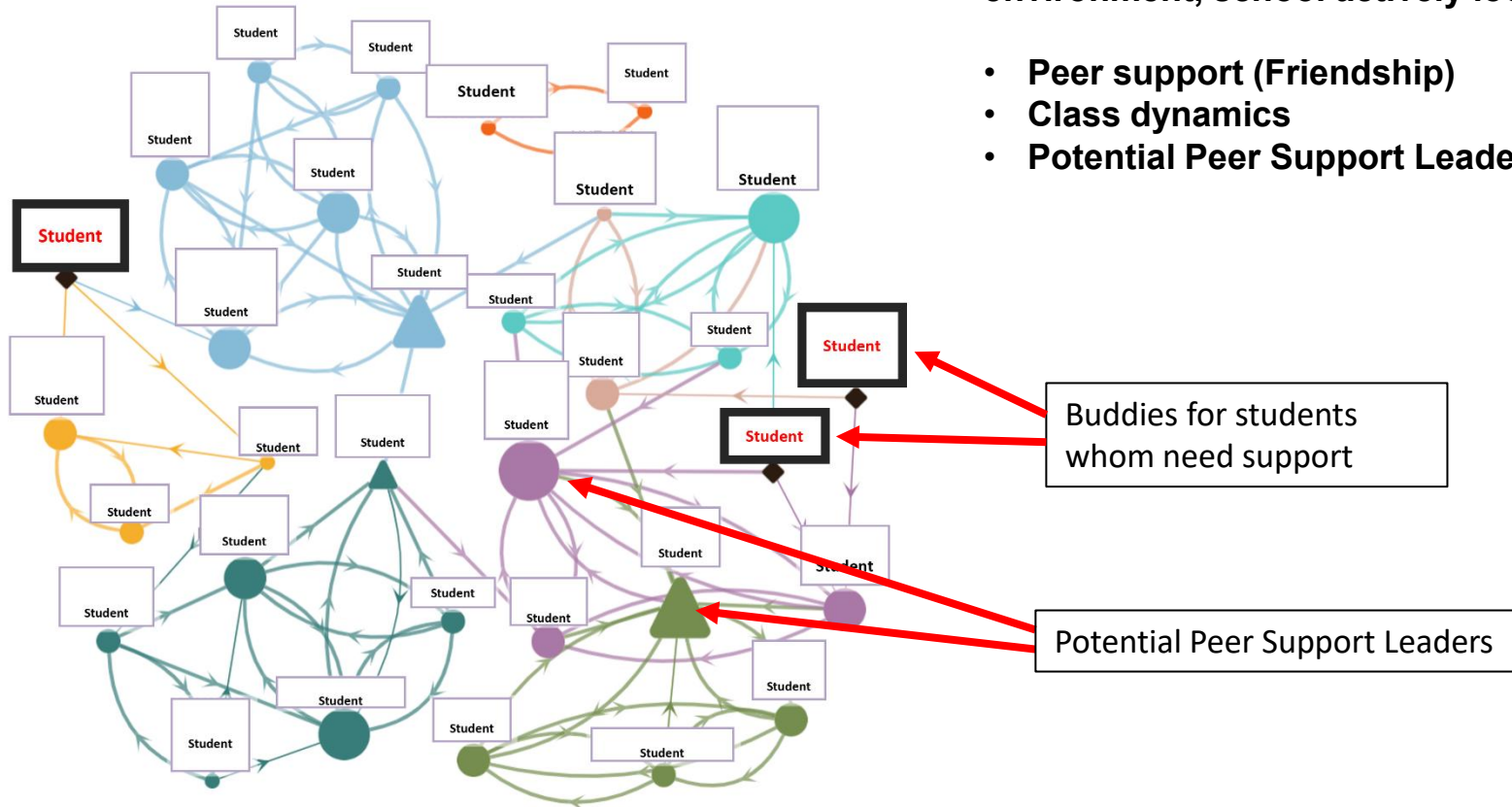
- 2023: 711
- 2024: 722
- 2025: 771
- 2026: 810 (as of 29 Dec 2025)



Class Sociogram

To build a caring & enabling school environment, school actively looks into:

- Peer support (Friendship)
- Class dynamics
- Potential Peer Support Leaders



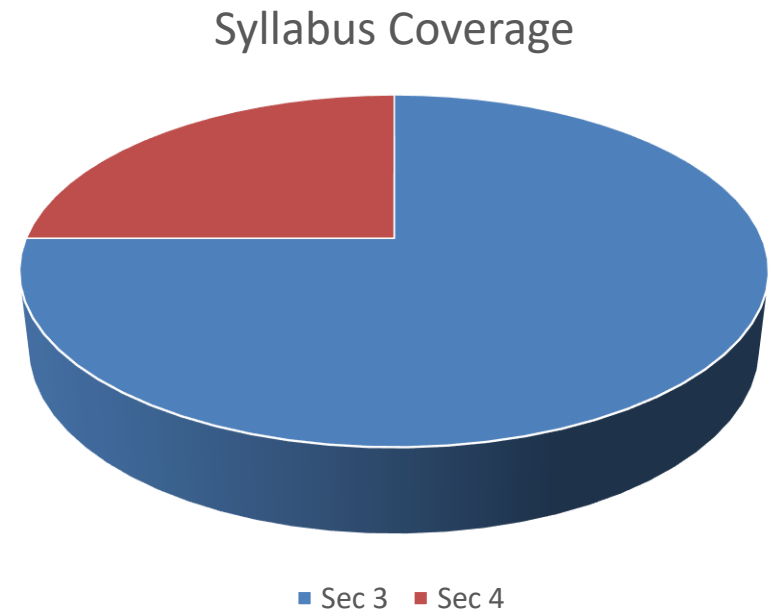
General Expectations of students

- Attendance and Punctuality
- Attention and Focus
- Load and Rigour
- Revision and Practice



How Important is Sec 3 Education?

- 2/3 of the syllabus coverage is done in Sec 3!
- The last 1/3 is covered in Sec 4 semester 1.
- We have to start working hard now!



School Support For Sec 3

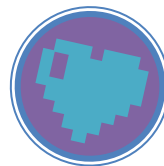


Supporting our students



➤ Supporting Students in their Academic Progress

- ✓ Weekly Supplementary Revision Programme
 - on a need basis
- ✓ Sec 3 Bridging Programme
- ✓ Form Teachers' sharing with their classes on Exam Preparation
- ✓ Form Teachers monitoring of students' WA results against holistic target setting & providing feedback to parents (PTMs)



ECG Preparation

To help students reserve a place at an institute of higher learning before their Examinations

- ✓ Careers' Day (27 February 2026)
- ✓ Students attend ApLMs@ITE (16 – 18 March 2026)
- ✓ Students attend ApLMs@Polytechnic (7 – 9 September)
- ✓ Work Experience Programmes (Interest Groups)
- ✓ Industrial Visits / Learning Journey (Interest Groups)
- ✓ ECG counselling by ECG Counsellor
- ✓ ApLMs@School (Sem 2 Post Examination Activities)

Assessment Period 2026

Weighted Assessment 2	Dates
Term 2 Weeks 5 – 7	20 April to 8 May
Weighted Assessment 3	Dates
Term 3 Weeks 4 – 8	23 July to 21 August
Weighted Assessment 4	Dates
Ongoing in Semester 2	
End-of-Year Examination	Dates
Term 4 Weeks 2 - 4	21 September to 6 October

A group of five school students, three girls and two boys, are standing on a green lawn in front of a modern school building. They are all wearing dark blue school uniforms with red ties. The building behind them has a colorful mural on the wall. The text "Thank You" is overlaid in the center of the image.

Thank You

OFFICIAL(OPEN) \ NON-SENSITIVE